

# Appendix 8 - 2021/22 Q4

## ENVIRONMENT, HERITAGE & WASTE MANAGEMENT

**Cabinet Member:** Councillor Jonathan Bacon

**Portfolio Responsibilities:**

- Environment
  - Parks and Open Spaces
  - Beach Huts and Beach Management
  - Rights of Way
  - Biosphere
  - Climate Change and Environment
  - Countryside Management
  - Allotments
  - Playing Fields / Sports Grounds
  - Amenity Land Hire
- Heritage
  - Libraries
  - Medina Theatre
- Museums
- Archaeology
- Records Office
- Waste
  - Waste Collection (Household, Schools and Trade)
  - Waste Disposal
  - Forest Road Waste Recovery Park (MT plant and energy from Waste Plant)
  - Household Waste Recycling Centres
  - Commercial Waste Recycling Centres
  - Closed Landfill sites
  - Littering and Fly Tipping

**Service Updates - Key Aspirations and Ongoing Business**

A programme of works is being developed and additional funding sought to annually increase the number of trees planted and maintained from April 2022 in accordance with a new tree management and planting plan to increase biodiversity, green corridors, and off-set carbon impacts.

Following the completion of a positive business case, the Dark Skies Application is being revised and will be resubmitted in the summer of 2022.

The waste team are considering the financial impact of higher cost of living and energy prices in respect of purchasing a third vehicle to support an increase in the number of garden waste service subscriptions. The team is currently studying market stability and the probability of securing 5,000 additional subscriptions next year.

There is a continuing programme of works to annually reduce the volume of non-essential waste sent to landfill, including the completion of the energy from waste plant in April 2022.

Regular meetings with SSE and relevant stakeholders are in place to help secure commitment from all to improve grid connectivity to the mainland. This activity will be built into the work plan of the Energy Hub within the Mission Zero Hub.

The Climate Change staff working group will seek to appoint Climate Ambassadors to support the development of activities across the council. Two cohorts of council staff including several Corporate Management Team members and the Chief Executive completed Carbon Literacy Training, thus allowing the organisation to apply for Carbon Literate Organisation Status.

In addition, the Climate Change e-learning module has been developed and is in the testing phase with a range of staff from across the council, and free Carbon Literacy Training offered by the Local Government Association for elected members has been circulated to all councillors.

Cabinet decisions were made in January regarding how the Biosphere will be supported by the council. This included moving the administration of the Biosphere from the Areas of Outstanding

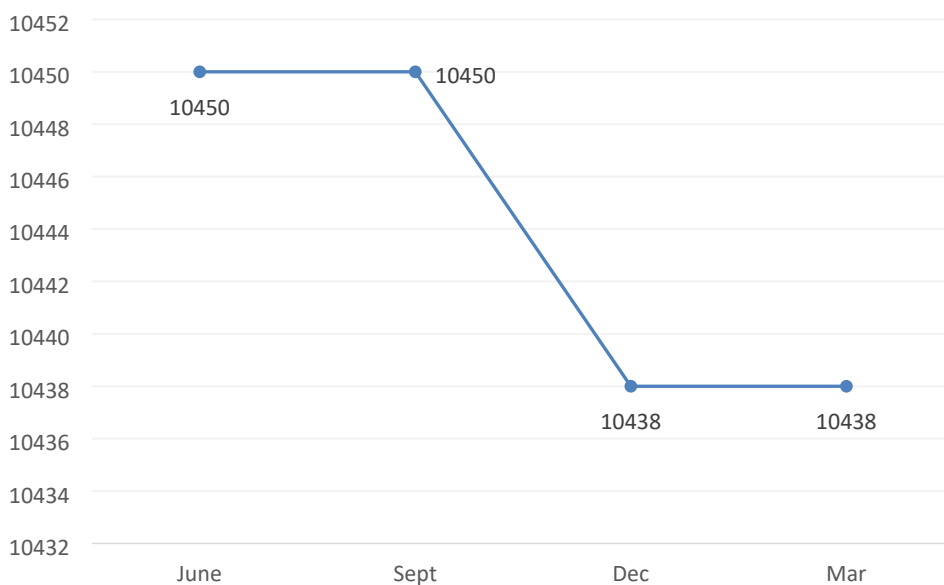
Natural Beauty to the council, thus aligning with the Mission Zero Hub. Additional resources are required to take on coordination role and will be appointed in due course.

The Cabinet Report template has been updated to require consideration of the Biosphere in all decision making, and Directorate Plans have been updated to include key activities related to Climate and the Biosphere.

Early meetings by the leads of the strategies have been held to develop a policy matrix plan detailing how the Climate and Environment Strategy, the Island Plan, the Sustainable Transport Plan, and the Biosphere Plan are aligned and mutually supportive of each other by July 2022 and together form the means to guide the maintenance and use of the Biosphere.

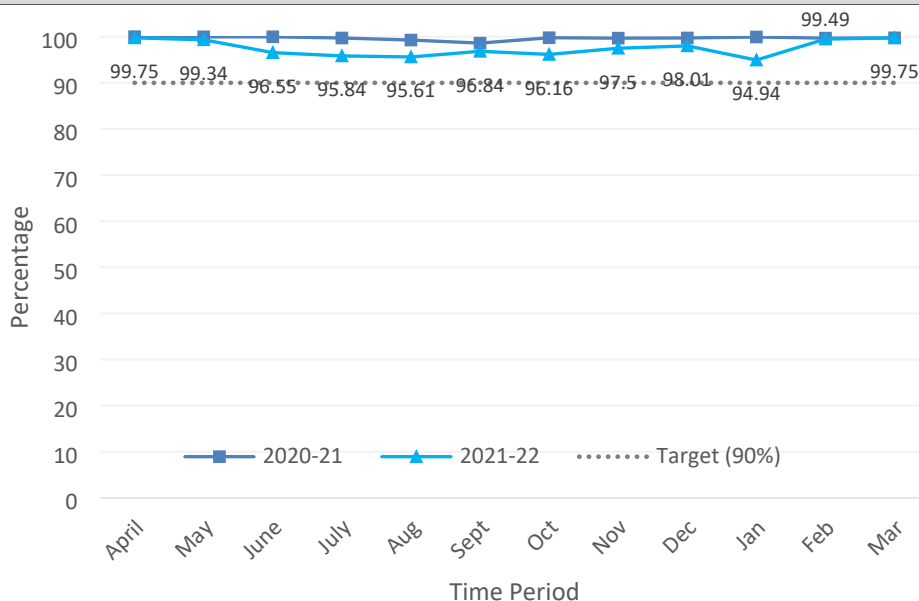
## Performance Measures

### Total number of garden waste subscribers



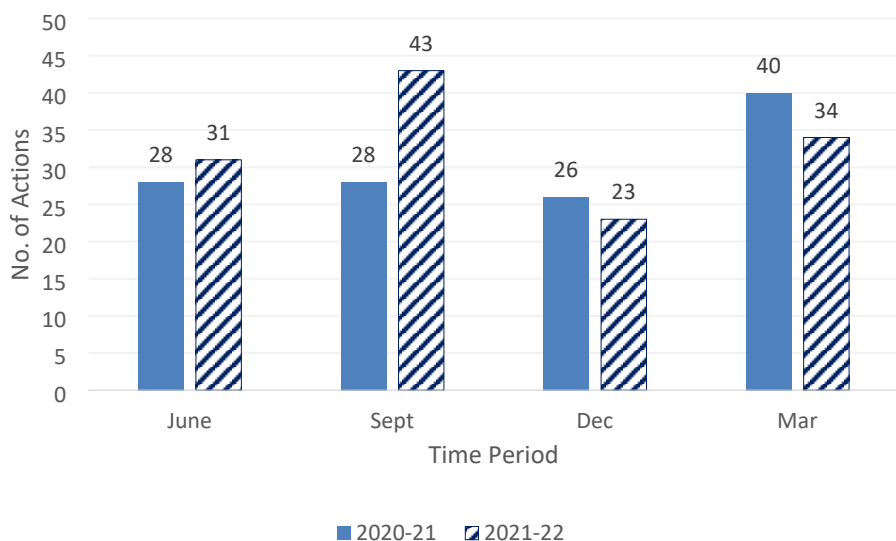
- As the service only opens to new subscribers once a year (in Spring) we will only see decreases due to cancelled subscriptions in the interim.
- There were 12 cancellations between the end of Quarter 2 and the end of Quarter 3
- At this time it is predicted that approximately 9866 subscribers will renew for a subsequent year
- Between 2020-21 and 2021-22, 73 subscribers advised they would not renew their subscription.

### Percentage of domestic waste diverted from landfill



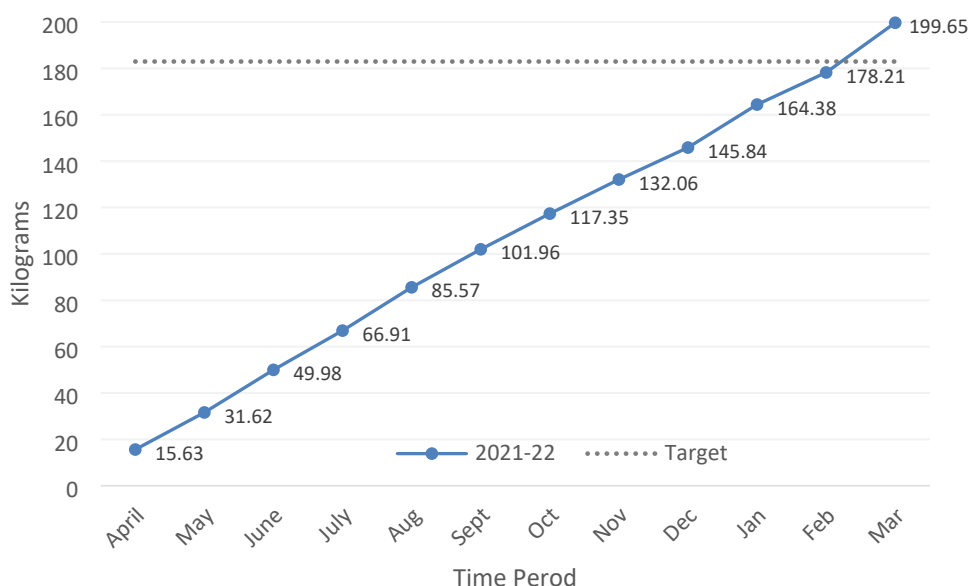
- Year to date, the percentage of municipal waste diverted from landfill stands at 97.48 compared to 99.64 year prior.
- Diversion rates remain well above the target 90 percent, as they have consistently throughout the last 2 years.

### Number of fly tip incidents and actions taken



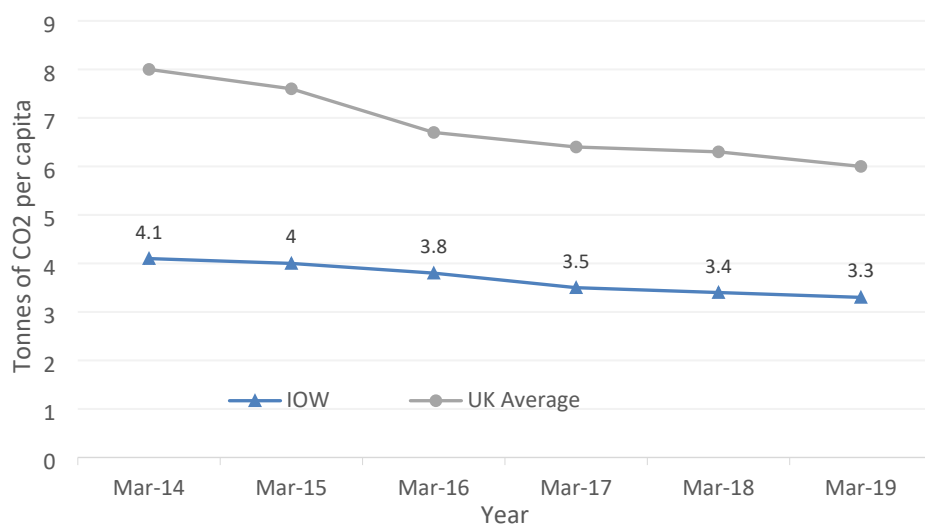
- 23 percent of fly tips collected from the highway were domestic side waste
- Up to the end of Quarter 4, there have been 855 incidents reported, with an average of 214 per Quarter since April 2021
- The number of actions taken each quarter have decreased when compared with the same period last year (40 actions in March 2021 against 34 in March 2022), and from the first half of this year.

### Reduction in residual (LACW) household waste per person



- The levels of reduction per person each month remains relatively consistent, with a year to date monthly average of 16.64 kilograms per person
- The end of year target for 2021-22 was 182.93 kilograms, which has been exceeded by 16.72 kilograms.

### Carbon emissions



- The Isle of Wight Council declared a climate emergency in July 2019, and our Climate and Environment Strategy and Action Plan was adopted in September 2021.
- Nearly 70 percent of emissions on the island come from 3 categories
  - Commercial and Industrial (23.6)
  - Road transport (22.9)
  - Domestic heating (22.2)

<ul style="list-style-type: none"> <li>We are currently below the average for all England unitary authorities, and continuing to drop year on year</li> </ul>
<b>Increase number of IWC employees cycling or walking to work (when they attend a workplace)</b>
<ul style="list-style-type: none"> <li>This is a new measure introduced in the 2021 Corporate plan and thus no data is yet available</li> <li>An update is expected during the 2022-23 financial year</li> </ul>
<b>Number of island schools &amp; colleges participating in the Eco Schools Programme</b>
<ul style="list-style-type: none"> <li>This is a new measure introduced in the 2021 Corporate plan and thus no data is yet available</li> <li>An update is expected during the 2022-23 financial year</li> </ul>
<b>Town &amp; Parish councils participating in the Green Impact Programme</b>
<ul style="list-style-type: none"> <li>This is a new measure introduced in the 2021 Corporate plan and thus no data is yet available</li> <li>An update is expected during the 2022-23 financial year</li> </ul>
<b>Percentage of council facilities using green energy only or on-site generation</b>
<ul style="list-style-type: none"> <li>This is a new measure introduced in the 2021 Corporate plan and thus no data is yet available</li> <li>An update is expected during the 2022-23 financial year</li> </ul>
<b>Percentage of council suppliers using green energy only or on-site generation</b>
<ul style="list-style-type: none"> <li>This is a new measure introduced in the 2021 Corporate plan and thus no data is yet available</li> <li>An update is expected during the 2022-23 financial year</li> </ul>

## Strategic Risks (As reported to Audit Committee March 2022)

<b>Failure of the Waste contract resulting in significant financial and operational disruption for the council and its residents</b>		
<b>Assigned to: Director of Neighbourhoods</b>		
<b>Inherent score</b>	<b>Target score</b>	<b>Current score</b>
<b>16 RED</b>	<b>5 GREEN</b>	<b>8 AMBER</b>
<b>Previous scores</b>		
<b>Nov 21</b>	<b>Sep 21</b>	<b>Jul 21</b>
<b>8 AMBER</b>	<b>8 AMBER</b>	<b>8 AMBER</b>
<b>No change to risk</b>		